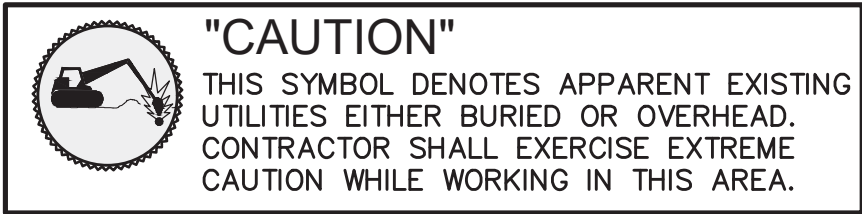




Know what's below.
Call before you dig.

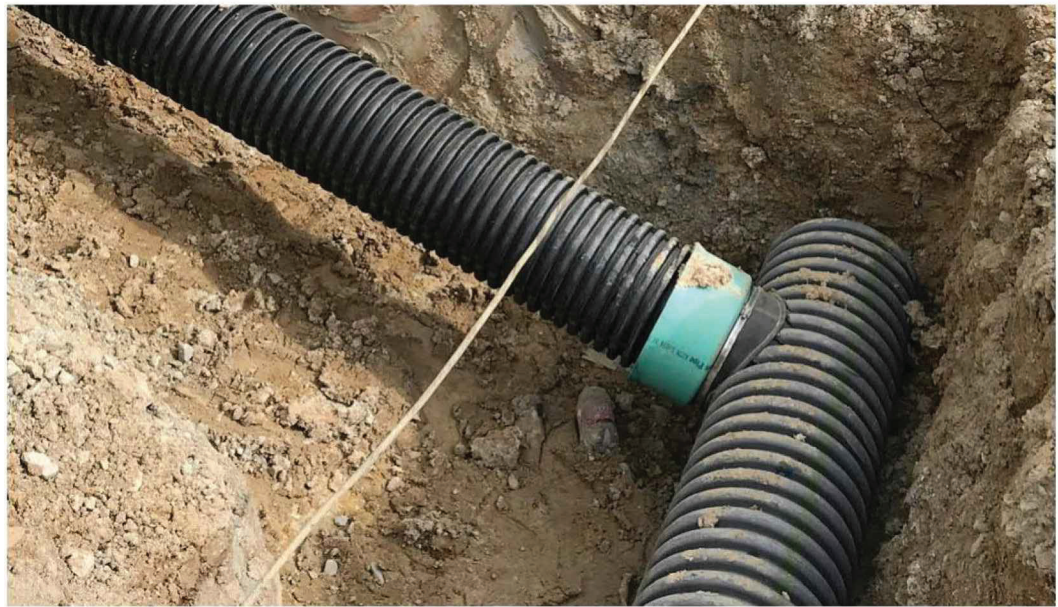


3 GENERAL DRAINAGE NOTES:

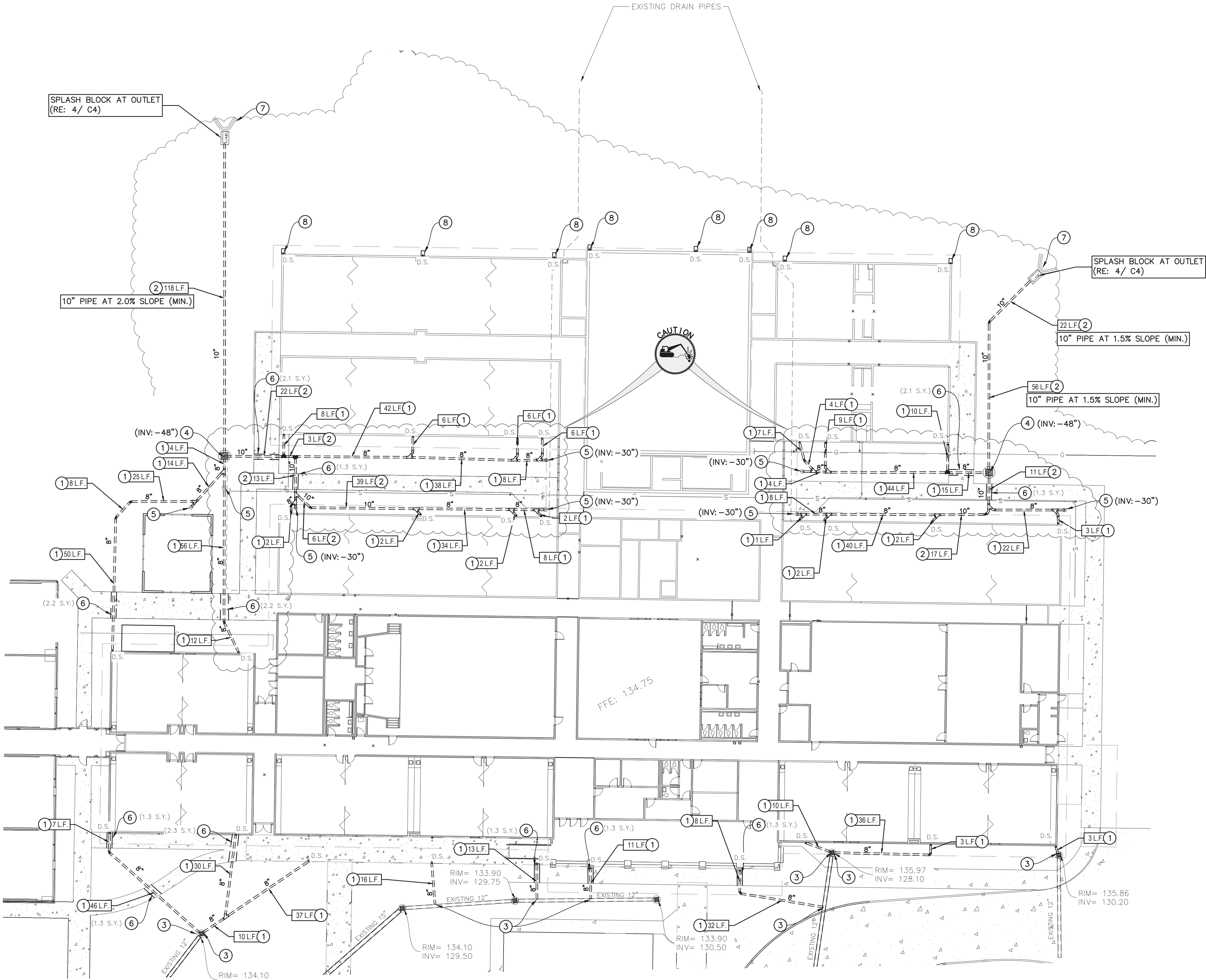
1. STORM DRAINAGE PIPE (S.D.P.) SHALL BE IN CONFORMANCE WITH THE SPECIFICATIONS; "n" = 0.012.
2. REFER TO STORM DRAINAGE TRENCH AND BEDDING DETAILS FOR PROPER INSTALLATION OF STORM DRAIN PIPE.
3. PIPE LENGTHS SHOWN ARE MEASURED FROM CENTERLINE TO CENTERLINE OF STRUCTURE.

2 DRAINAGE PLAN MASTER KEY

- 1 8" DOWNSPOUT CONNECTION PIPING WITH FACTORY FABRICATED FITTINGS AND DOWNSPOUT ADAPTER (1.0% SLOPE MIN.) (TYPICAL) (LENGTH INDICATED ON PLAN.)
- 2 10" DOWNSPOUT HEADER PIPE (LENGTH INDICATED ON PLAN.)
- 3 CONNECT TO EXISTING HDPE/ PVC PIPE OR PVC CATCH BASIN WITH INSERTA TEE FOR WATER TIGHT CONNECTION
- 4 PVC DRAIN BASIN (DEPTH NOTED ON PLAN)
- 5 CLEANOUT ASSEMBLY (ESSENTIAL DEPTH NOTED ON PLAN)
- 6 SAW CUT, REMOVE AND REPLACE CONCRETE WALK (S.Y. INDICATED ON PLAN)
- 7 GRADE AT OUTLET AS REQUIRED FOR POSITIVE DRAINAGE
- 8 DOWNSPOUT SPLASH BLOCK (RE: 6/ C4)



INSERTA TEE VISUAL



1 PLAN
SCALE: 1" = 20'



CALL LOUISIANA ONE CALL - JUST DIAL 811
LOUISIANA STATE LAW, SECTION R.S.48:1748.15, REQUIRES EXCAVATORS AND DEMOLISHERS TO NOTIFY A REGIONAL NOTIFICATION CENTER BY TELEPHONE 48 HOURS TO 120 HOURS IN ADVANCE OF ANY EXCAVATION OR DEMOLITION ACTIVITY. THE OWNERS/OPERATORS OF ANY UNDERGROUND FACILITY MUST THEN MARK THE AREA OR PROVIDE INFORMATION THAT WILL ENABLE AN EXCAVATOR OR DEMOLISHER TO DETERMINE THE LOCATION OF UNDERGROUND FACILITIES.

